

## **FOR LEASE**

**42 N. WEST AVENUE, VINELAND, NJ**  
**NorthWest Business Center – Building C**  
**CUMBERLAND COUNTY**

### **SIZE**

- 27,600 sf
- Divisible into two separate areas:  
18,000 sf & 9,500 sf

### **ZONING:**

- West Vineland Village District

### **BENEFITS:**

- Located in the Urban Enterprise Zone.
- Convenient to Route 55 and Delsea Drive

### **PARKING:**

- 31 spaces
- 1500 sf yard area

### **SPRINKLER SYSTEM:**

- Wet

### **POWER:**

- 3 Phase @ 480 Volts

### **UTILITIES:**

- Public water, sewer, electric and gas services

### **OTHER FEATURES:**

- 18' 4" Ceiling height
- Column Width 16' x 24'
- Exterior dock with five truck doors

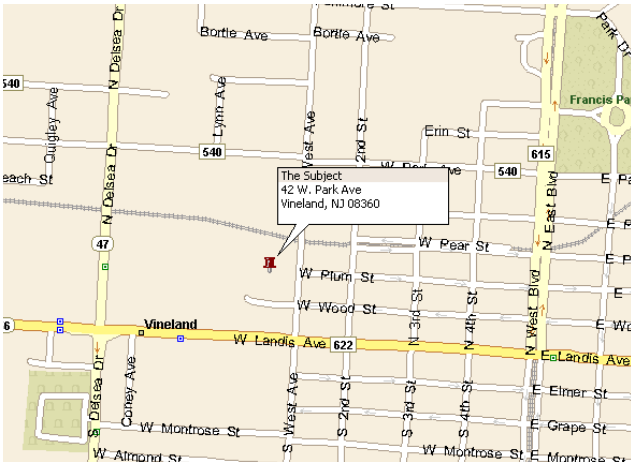
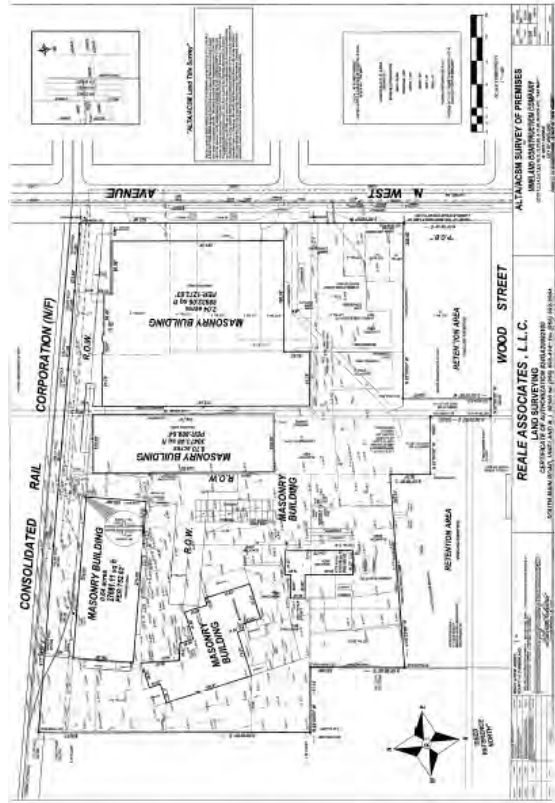
### **BUILDING DESCRIPTION:**

Warehouse space divided into two separate sections. An exterior 8' wide dock runs along one side with a ramp down to grade.



**VINELAND CONSTRUCTION COMPANY**

71 West Park Avenue  
Vineland, New Jersey 08360  
856.794.4500



**VINELAND CONSTRUCTION COMPANY**  
 71 West Park Avenue  
 Vineland, New Jersey 08360  
 856.794.4500